

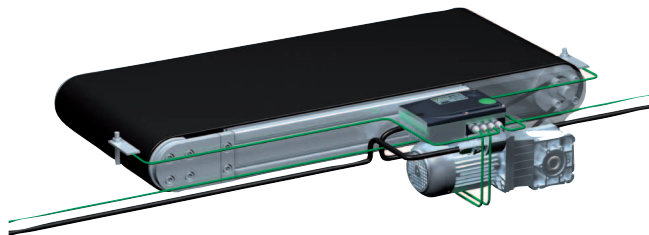
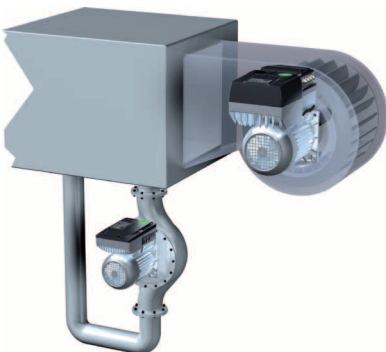
Efficiently and consistently decentralized.



The compact 8400 motec motor inverter is an attractive alternative, particularly for intralogistic applications as well as pumps and fans and guarantees a high degree of efficiency in every respect. It can be mounted either on the geared motor or on the wall and is available in a power range of .50 to 10.0 Hp (0.37 to 7.5 kW).

Highlights

- IP65 as standard
- Energy savings of up to 30% are possible in connection with the MF motor series, which is exclusively tailored to the motor inverter
- Large LED ensures that operating status is clearly visible from a distance



Inverter Drives 8400 motec – at a glance

The drive unit – simple handling

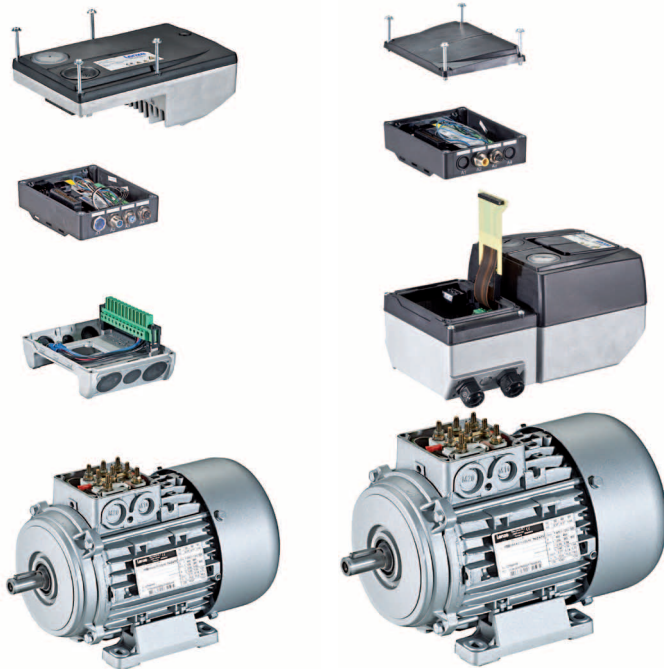
- Simple commissioning via DIP switch, potentiometer or diagnosis terminal
- Easy to replace memory module
- Large LED status display – clearly visible, even under the most challenging installation conditions

The communication unit – functionality on site

- CANopen, PROFIBUS, PROFINET, EtherCAT, EtherNET/IP and AS interface
- Includes integrated STO safety technology
- I/Os on board
- Pluggable M-12 connection system for communication, safety engineering and sensor technology or via screwed connections

The wiring unit – easily accessible and simple to connect

- Flexible connection options such as cable glands and various plug connections
- Connection for brake resistor
- Spring-applied brake control



8400 motec .50 Hp to 4.0 Hp
(0.37 to 3.0 kW)

8400 motec 5.0 to 10.0 Hp
(4.0 to 7.5 kW)

Functions	<ul style="list-style-type: none"> Freely assignable user menu Motor identification V/f control with/without encoder (linear or square-law) “VFC eco” Flying restart circuit S-ramps for smooth acceleration and deceleration I2t motor monitoring DC injection brake Fixed frequencies Parameter change-over PID controller Integrated, wear free brake control
Properties	<ul style="list-style-type: none"> Protection against short circuits, earth faults, overvoltage, motor stalling Integrated interference suppression in accordance with EN 61800-3, category C2, category C1 motor mounted ≤ 2.0 Hp (1.5 kW) Protection against restart for cyclic mains switching Usable in an IT system Safe torque off (STO), EN ISO 13849-1 (PL e), EN 61508/EN 62061 (SIL 3) Approvals: CE, UR, cUR, RoHS