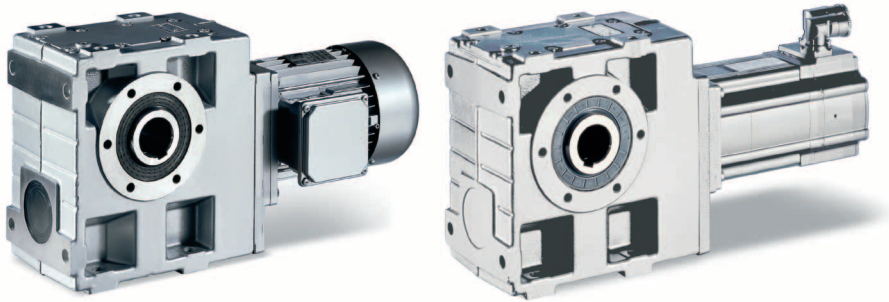


Quiet operations.



Helical worm gearboxes are particularly low-noise drive components.

The helical worm gearboxes are available as 2-stage and 3-stage versions and can reach a torque of up to 1,250 Nm and a ratio of up to $i=1847$.

Models

- 2-stage and 3-stage gearboxes
- Hollow shaft with keyway or shrink disc
- Solid shaft with feather key
- Foot or flange mounting
- Torque plate, including rubber buffer

Technical data

Gearbox size		GSS04	GSS05	GSS06	GSS07
Max. torque	[Nm]	180	360	720	1250
Ratio range		5.7 - 208	5.7 - 1176	5.8 - 1847	5.9 - 1772
Dimensions					
Hollow shaft	[mm]	25/30	30/35	40/45	50/55
Solid shaft	[mm]	25 x 50	30 x 60	40 x 80	50 x 100
Flange	[mm]	160	200	200/250	250/300

GSS Helical-worm geared motors

Gearboxes

When combined with our integrated three-phase AC motors and servo motors, our helical-worm geared motors form a compact, effective drive unit. Numerous drive-end and output-end options allow precise matching of the drive to your specific application.

Models

- With three-phase AC motors in line with the ErP Directive in the power range from 0.12 to 15 kW
- With servo motors in the power range from 0.25 to 11.3 kW
- As a Drive Package with the decentralised Inverter Drives 8400 motec, covering the power range up to 7.5 kW.

Matched to your environmental conditions

Gearboxes with	Three-phase AC motors	Servo motors
Degree of protection		
EN 60529	IP55	IP54 / IP65
Approvals	cURus, GOST-R, CCC and UkrSepro	
Climatic conditions		
Storage temperature	-30°C to +60°C	
Operating temperature	-20°C to +40°C	
Surface and corrosion protection		
OKS-G (primed)	1K primer coat	
OKS-S (small)	2K-PUR top coat	
OKS-M (medium)	1K primer coat 2K-PUR top coat	
OKS-L (large)	2K-EP primer coat 2K-PUR top coat	